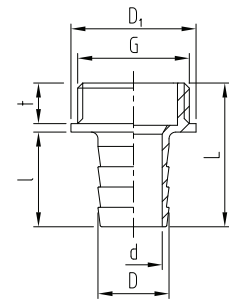


ABA Gewindestutzen



Preisgruppe VT 2			Ausführung	G-Zoll ISO 228	G ₁	Schlauch- größe		d	D	D ₁	l	l ₁	L	t	t ₁	SW
Best-Nr.	VPE	€/Stck		Zoll	Zoll	Zoll	mm	mm	mm	mm	mm	mm	mm	mm	mm	mm
10002.103.2	10	1,35	Messing blank	3/8"		3/8"	10	8	11,5	21	24		34,5	8		
10002.210.2	10	2,06	Messing blank	3/8"		1/2"	13	11	14,2	21	24		34	8		
10002.215.2	10	2,69	Messing blank	1/2"		3/8"	10	8	11,5	26	24		35,5	9		
10002.104.2	10	1,39	Messing blank	1/2"		1/2"	13	11	14,2	26	24		35,5	9		
10002.216.2	10	2,54	Messing blank	1/2"		5/8"	16	13,5	17	26	26		37,5	9		
10002.217.2	10	1,69	Messing blank	1/2"		3/4"	19	16	21	26	28		39,5	9		
10002.218.2	10	3,91	Messing blank	1/2"		1"	25	22	27,5	27,5	35		44	9		
10002.106.2	10	2,32	Messing blank	3/4"		3/4"	19	17	21	32	28		40,5	9,5		
10002.229.2	10	4,22	Messing blank	3/4"		1"	25	20	27	32	35		47,5	10		
10002.238.2	10	3,91	Messing blank	1"		3/4"	19	17	21	37	28		42,5	12		
10002.110.2	10	3,95	Messing blank	1"		1"	25	22	27,5	37	35		49,5	12		
10002.239.2	10	5,30	Messing blank	1"		1 1/4"	32	27	33	37	39		53,5	12		
10002.240.2	10	8,06	Messing blank	1"		1 1/2"	38	35	40	40	47		59	12		
10002.246.2	10	8,88	Messing blank	1 1/4"		1"	25	22	27,5	47	35		52	14		
10002.112.2	10	7,09	Messing blank	1 1/4"		1 1/4"	32	28	33	47	38,5		57,5	15		
10002.247.2	10	12,83	Messing blank	1 1/4"		1 1/2"	38	35	40	47	47		64	14		
10002.252.2	10	14,67	Messing blank	1 1/2"		1"	25	22	27,5	53	34		53	16		
10002.253.2	10	13,64	Messing blank	1 1/2"		1 1/4"	32	28	33	53	39		59	16		
10002.114.2	10	18,45	Messing blank	1 1/2"		1 1/2"	38	35	40	53	47		66	16		
10002.265.2	10	20,41	Messing blank	2"		1 1/2"	38	35	40	65	47		69	18		
10002.120.2	5	25,33	Messing blank	2"		2"	50	45	52	65	57		79	18		

■ schwere Ausführung