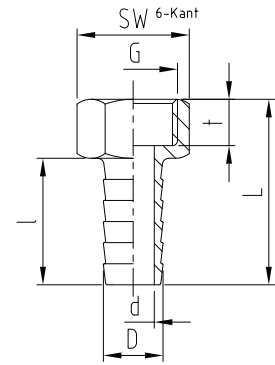
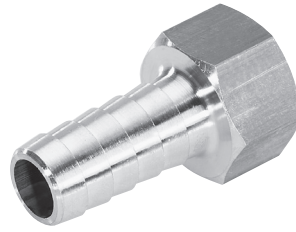


## ABA Gewindestutzen mit Sechskant und Innengewinde



Preisgruppe VT 2			Ausführung	G-Zoll ISO 228	G <sub>1</sub>	Schlauch- größe		d	D	D <sub>1</sub>	l	l <sub>1</sub>	L	t	t <sub>1</sub>	SW
Best-Nr.	VPE	€/Stck		Zoll	Zoll	Zoll	mm	mm	mm	mm	mm	mm	mm	mm	mm	mm
10011.501.2	10	<b>2,89</b>	Messing blank	1/8"		1/4"	6	5	7,5		25		35		8	
10011.505.2	10	<b>0,90</b>	Messing blank	1/4"		1/4"	6	4,5	7,5		25		36		9	
10011.506.2	10	<b>0,94</b>	Messing blank	1/4"		5/16"	8	6	9,5		25		36		9	
10011.507.2	10	<b>0,80</b>	Messing blank	1/4"		3/8"	10	7	11,5		25		36		9	
10011.509.2	10	<b>2,86</b>	Messing blank	1/4"		1/2"	13	10	14,2		30		41		9	
10011.512.2	10	<b>2,39</b>	Messing blank	3/8"		1/4"	6	4,5	7,5		25		36		9	
10011.513.2	10	<b>1,46</b>	Messing blank	3/8"		5/16"	8	6	9,5		25		36		9	
10011.514.2	10	<b>1,43</b>	Messing blank	3/8"		3/8"	10	7	11,5		25		36		9	
10011.516.2	10	<b>1,54</b>	Messing blank	3/8"		1/2"	13	10	14,2		30		41		9	
10011.519.2	10	<b>3,68</b>	Messing blank	1/2"		1/4"	6	4,5	7,5		25		39		11	
10011.520.2	10	<b>4,65</b>	Messing blank	1/2"		5/16"	8	6	9,5		25		39		11	
10011.521.2	10	<b>1,56</b>	Messing blank	1/2"		3/8"	10	7	11,5		25		39		11	
10011.523.2	10	<b>1,88</b>	Messing blank	1/2"		1/2"	13	10	14,2		30		44		11	