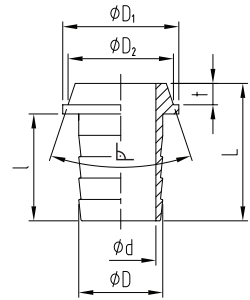
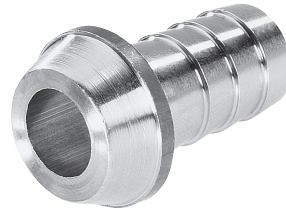


ABA Schlauchtülle konischdichtend



Preisgruppe VT 2			Ausführung	G-Zoll ISO 228	G ₁	Schlauch- größe		d	D	D ₁	D ₂	l	l ₁	L	t	t ₁	β
Best-Nr.	VPE	€/Stck		Zoll	Zoll	Zoll	mm	mm	mm	mm	mm	mm	mm	mm	mm	mm	mm
13001.002.2	10	0,85	Messing blank			1/4"	6	4,5	7,5	14,5	14	23,5		30	5		37°
13001.003.2	10	1,08	Messing blank			3/8"	10	8,5	11,5	17	16	25		32	5		37°
13001.104.2	10	0,80	Messing blank			1/2"	13	11	14,2	17,5	16	25		32	5		37°
13001.004.2	10	1,16	Messing blank			1/2"	13	11	14,2	22	21	25		33	6		37°
13001.005.2	10	3,17	Messing blank			5/8"	16	13,5	17	22,5	21	28		36	6		37°
13001.106.2	10	1,46	Messing blank			3/4"	19	13	21	24	21	27		35,5	6		37°
13001.227.2	10	1,89	Messing blank			1/2"	13	11	14,2	29,5	27	24		34,5	6		37°
13001.006.2	10	1,62	Messing blank			3/4"	19	17	21	28	27	27		35,5	6		37°
13001.110.2	10	2,44	Messing blank			1"	25	18,5	27,5	30	27	35		43,5	6		37°
13001.010.2	10	3,39	Messing blank			1"	25	23	27,5	38	34,5	35		45	7		37°
13001.112.2	10	5,68	Messing blank			1 1/4"	32	28	33	38	34,5	42		52	7		37°
13001.012.2	10	7,90	Messing blank			1 1/4"	32	28	33	44	42	42		53	8		37°
13001.114.2	10	8,10	Messing blank			1 1/2"	38	34	40	44	42	50		61	8		37°
13001.014.2	10	11,50	Messing blank			1 1/2"	38	35	40	50	47	50		62,5	9		37°
13001.020.2	1	20,16	Messing blank			2"	50	45	52	66	62	61		76	11		37°